



**DEVELOPMENT PERMIT NO. DP001063**

**WINDHOVER ENTERPRISES LIMITED**

**Name of Owner(s) of Land (Permittee)**

**2491 KENWORTH ROAD**

**Civic Address**

1. This development permit is issued subject to compliance with all of the bylaws of the municipality applicable thereto, except as specifically varied or supplemented by this permit.
2. This development permit applies to and only to those lands within the municipality described below, and any and all building structures and other developments thereon:

Legal Description:

**LOT 1, DISTRICT LOT 20, RANGE 6, MOUNTAIN DISTRICT, PLAN EPP54791**

**PID No. 029-710-359**

3. The land described herein shall be developed strictly in accordance with the following terms and conditions and provisions of this permit and any plans and specifications hereto which shall form a part thereof.

**Schedule A Location Plan**

**Schedule B Site Plan and Wayfinding Plan**

**Schedule C Building Elevations**

**Schedule D Landscape Plan and Details**

- a) If the applicant does not substantially commence the development permitted by this permit within two years of the date of this permit, the permit shall lapse.
4. This permit is not a building permit nor does it constitute approval of any signage. Separate applications must be made for a building permit and sign permit.

5. The City of Nanaimo "ZONING BYLAW 2011 NO. 4500" is varied as follows:

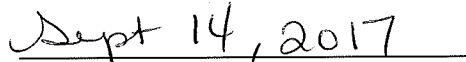
1. *Section 13.2.1 Conditions of Use* – to allow a maximum of 1,150.9m<sup>2</sup> of the recycling depot use to be outside of an enclosed building.

**CONDITIONS OF PERMIT**

1. The subject property is developed in accordance with the Site Plan and Wayfinding Plan prepared by Checkwitch Poiron Architects Inc., dated 2017-JUL-18, as shown on Schedule B.
2. The development is in general compliance with the Building Elevations prepared by Checkwitch Poiron Architects Inc., dated 2017-AUG-10, as shown on Schedule C.
3. The subject property is in general compliance with the Landscape Plan and specifications prepared by Gemella Design Inc., dated 2017-JUL-18, as shown on Schedule D.
4. The property owner is to obtain the necessary Waste Stream Management Licence for the proposed development to be issued by the Regional District of Nanaimo.

AUTHORIZING RESOLUTION PASSED BY COUNCIL  
THE 11TH DAY OF **SEPTEMBER, 2017.**

  
Corporate Officer

  
Date

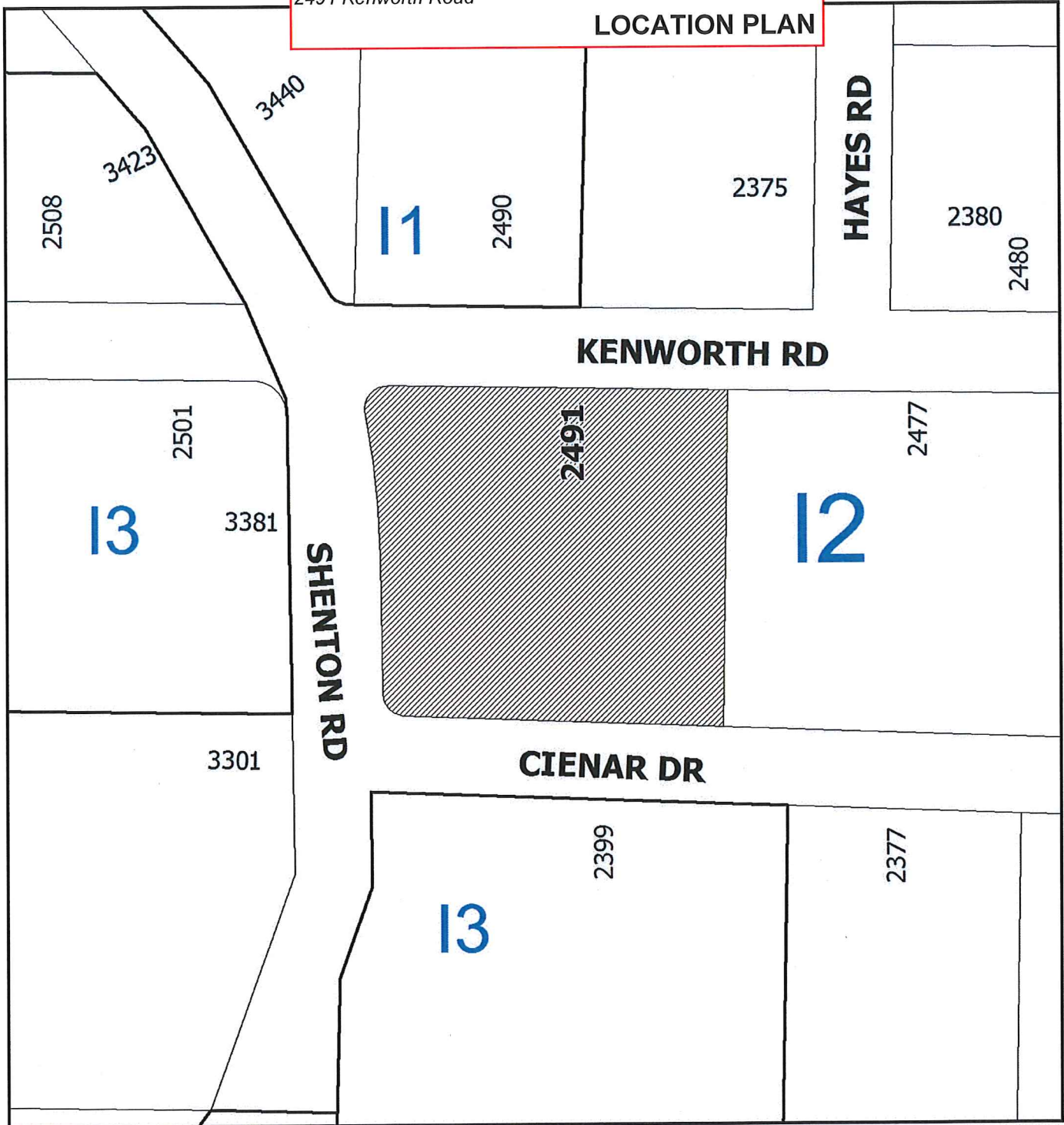
GN/ln

Prospero attachment: DP001063

Development Permit DP001063  
2491 Kenworth Road

Schedule A

**LOCATION PLAN**



DEVELOPMENT PERMIT NO. DP001063



**LOCATION PLAN**

Civic: 2491 Kenworth Road  
Lot 1, Section 20, Range 6, Mountain District,  
Plan EPP54791



**Subject  
Property**



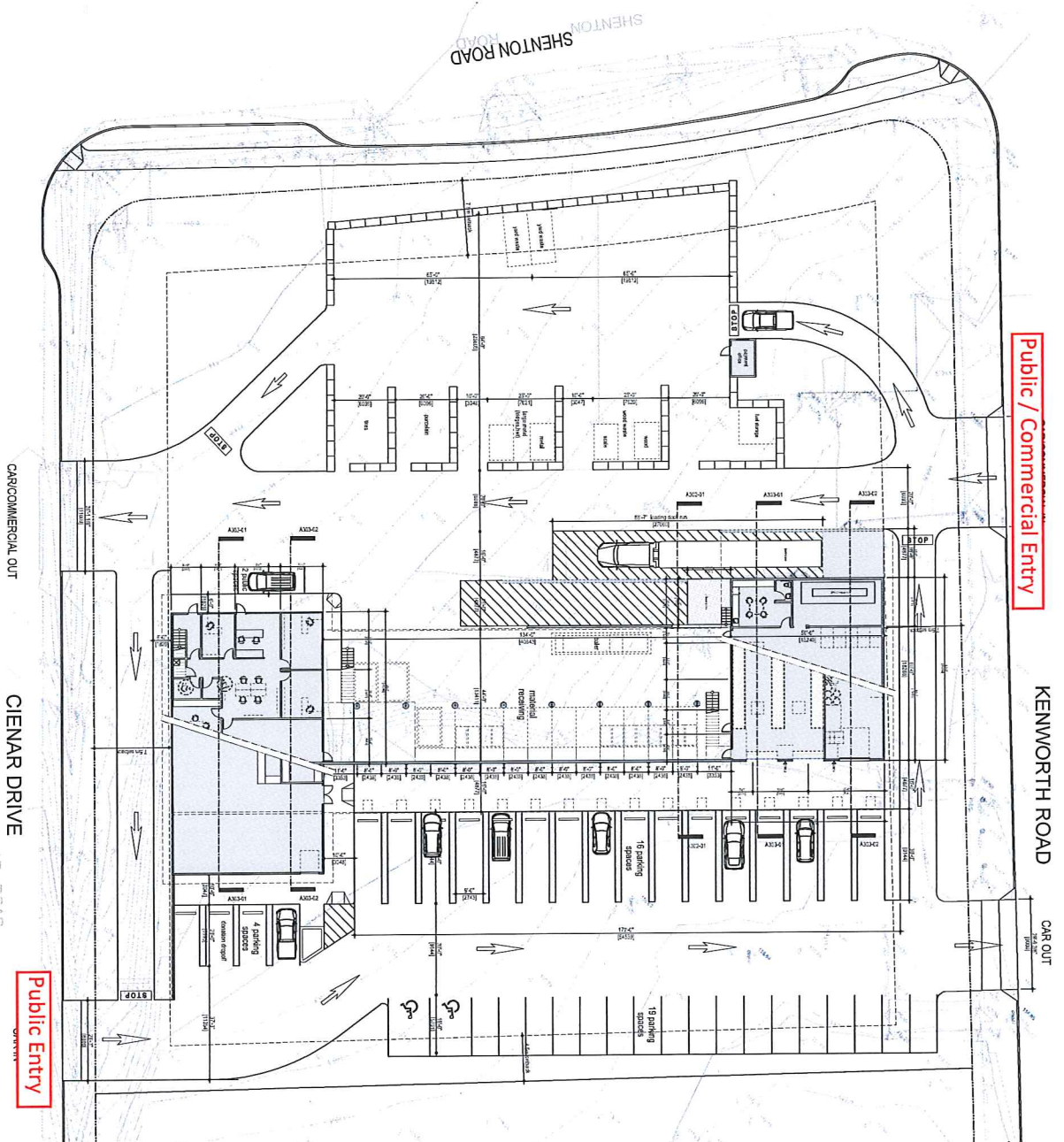
2491 Kenworth Road

## 1/2 SITE PLAN AND WAYFINDING PLAN

1/2



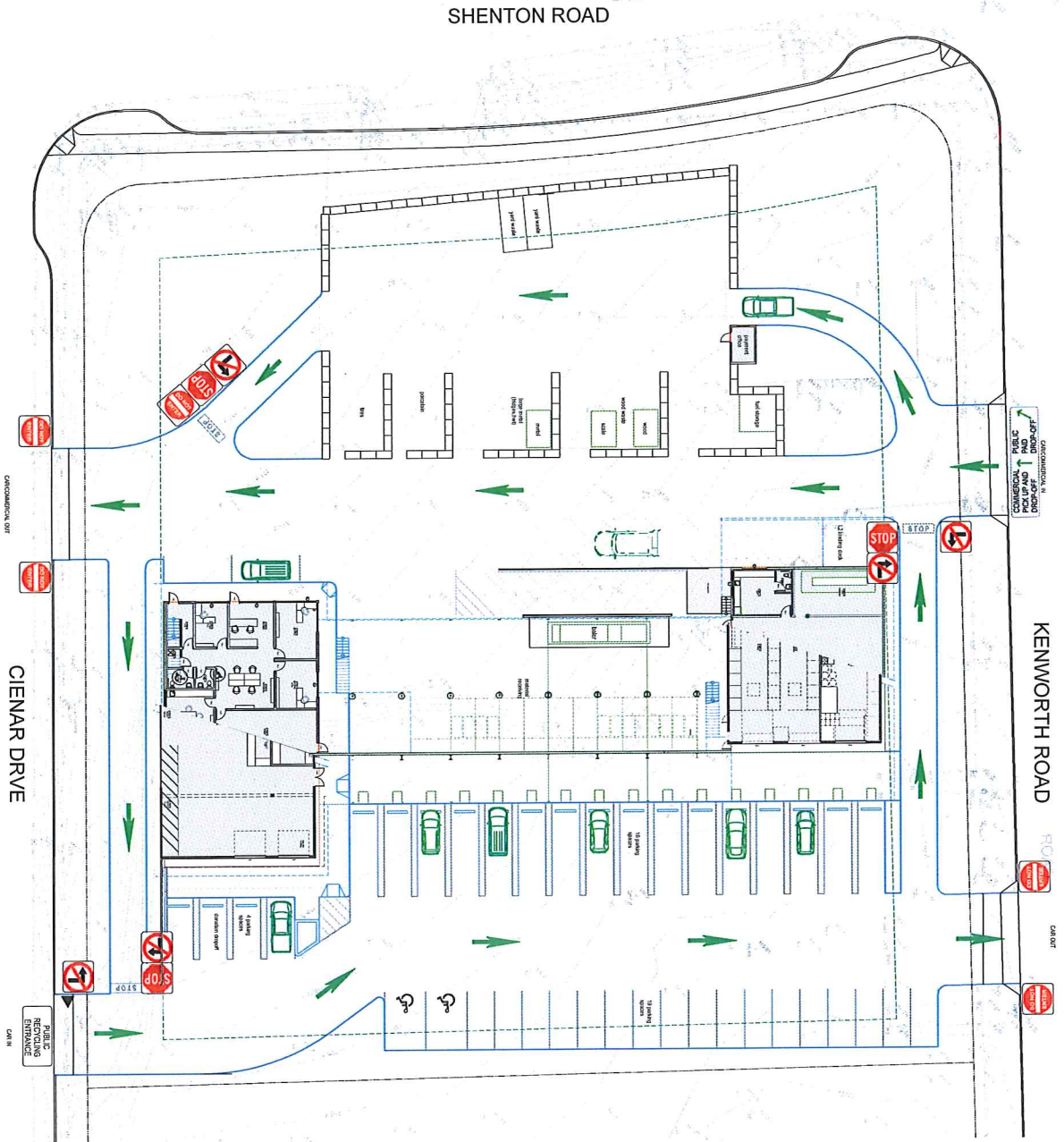
## Location Plan

[illegible]

# Nanaimo Recycling Exchange

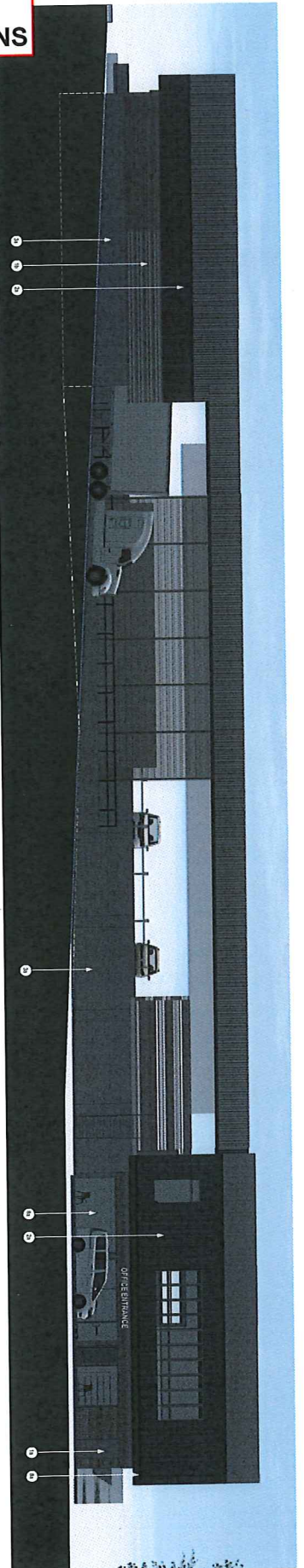
2477 Kenworth Rd, Nanaimo, BC V8T 5K4

Project Name	Nanaimo Recycling Exchange	Sheet No.	1A	Revision	01
Client	City of Nanaimo	Scale	1" = 100'	Drawn By	CP
Project No.	2477 NS-10	Date	2017.10.10	Checked By	CP
Project Location	2477 Kenworth Rd, Nanaimo, BC V8T 5K4	Project Manager	CP	Project Engineer	CP
Project Description	Site Plan with Grading	Project Status	Final	Project Date	2017.10.10
Project Notes	A102				

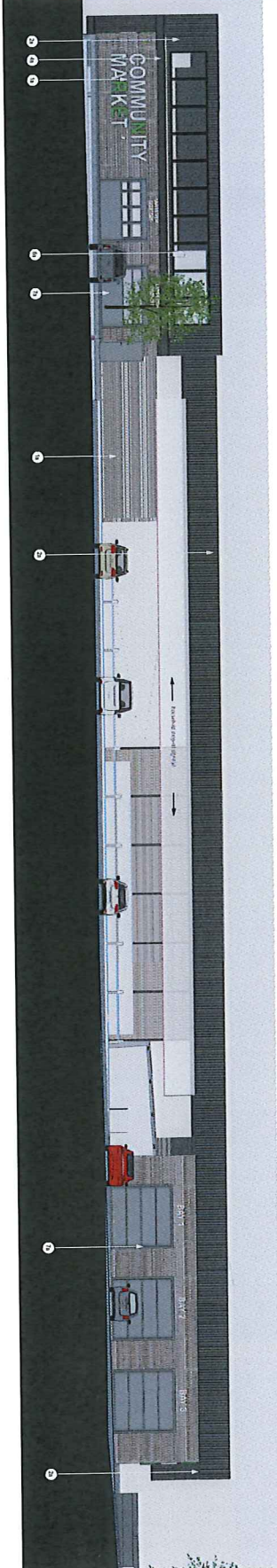




Development Permit DP001063 Schedule C  
491 Kenworth Road  
1/3  
BUILDING ELEVATIONS

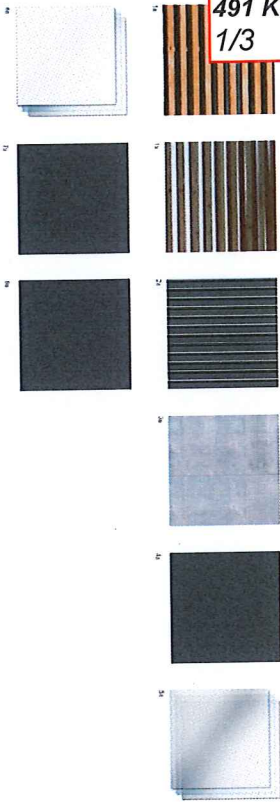


WEST ELEVATION (facing Shenton Road)

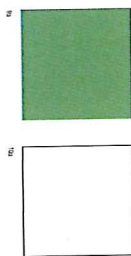


EAST ELEVATION

Materials



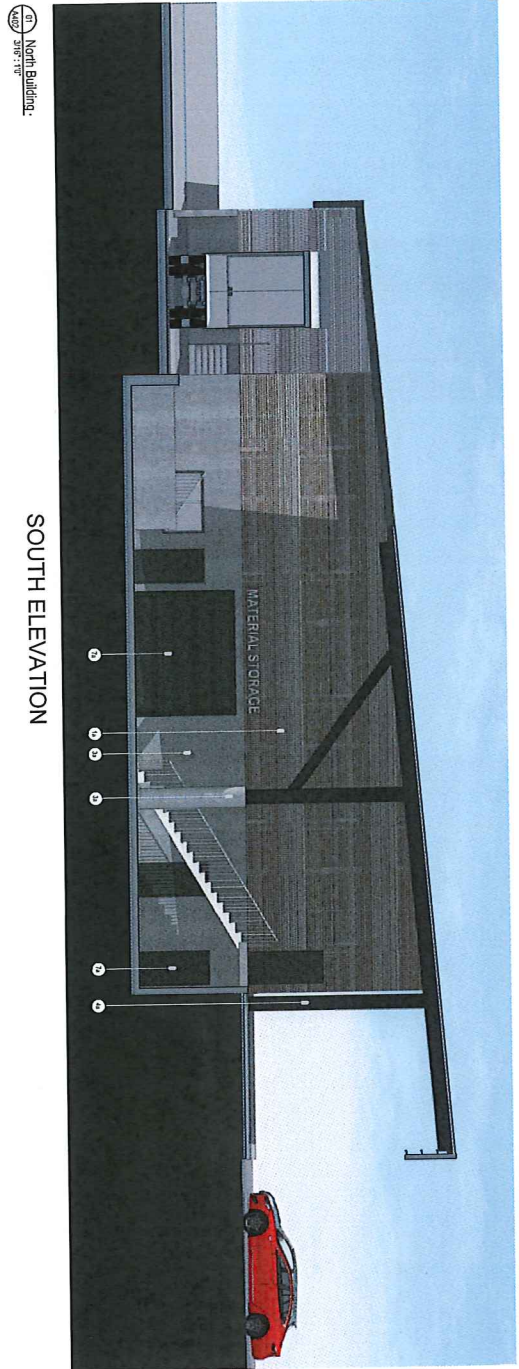
Signage



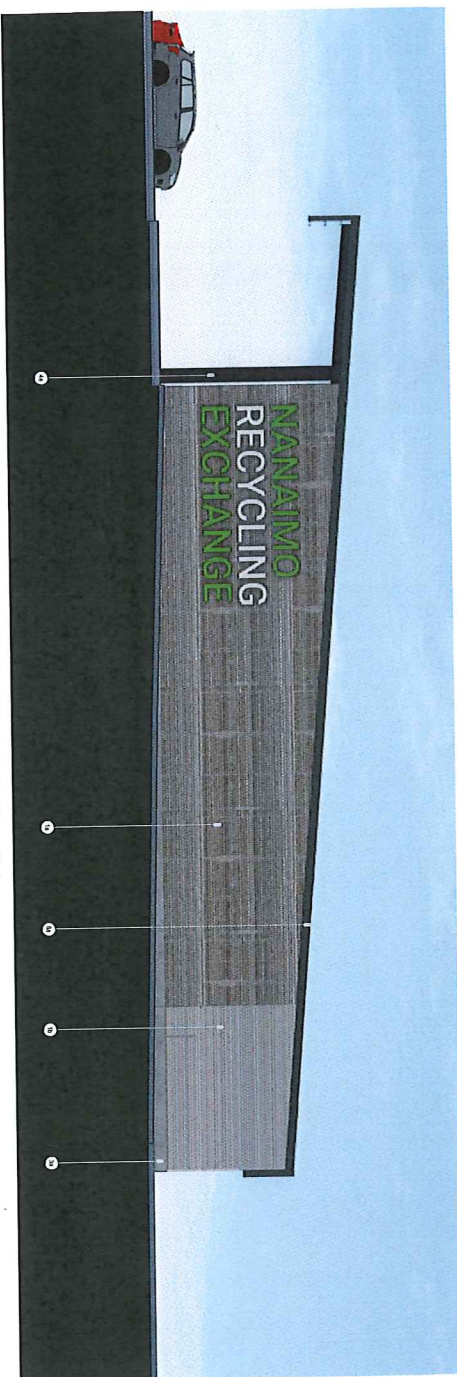
Exterior Materials Schedule

Material	Finish	Color	Notes
1. Concrete	Smooth	Grey	Use 1500 psi concrete for exterior walls
2. Brick	Glazed	Dark Grey	Use 1500 psi concrete for exterior walls
3. Natural Stone	Random	Dark Grey	Use 1500 psi concrete for exterior walls
4. Slate	Random	Dark Grey	Use 1500 psi concrete for exterior walls
5. Natural Stone	Random	Dark Grey	Use 1500 psi concrete for exterior walls
6. Natural Stone	Random	Dark Grey	Use 1500 psi concrete for exterior walls
7. Natural Stone	Random	Dark Grey	Use 1500 psi concrete for exterior walls
8. Natural Stone	Random	Dark Grey	Use 1500 psi concrete for exterior walls
9. Natural Stone	Random	Dark Grey	Use 1500 psi concrete for exterior walls
10. Natural Stone	Random	Dark Grey	Use 1500 psi concrete for exterior walls



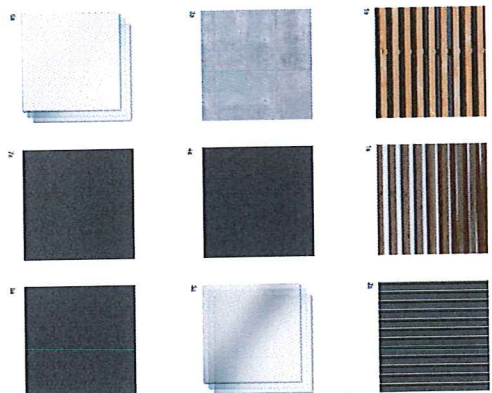


SOUTH ELEVATION

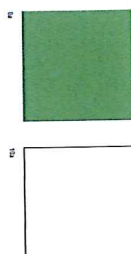


NORTH ELEVATION (facing Kenworth Road)

Exterior Materials



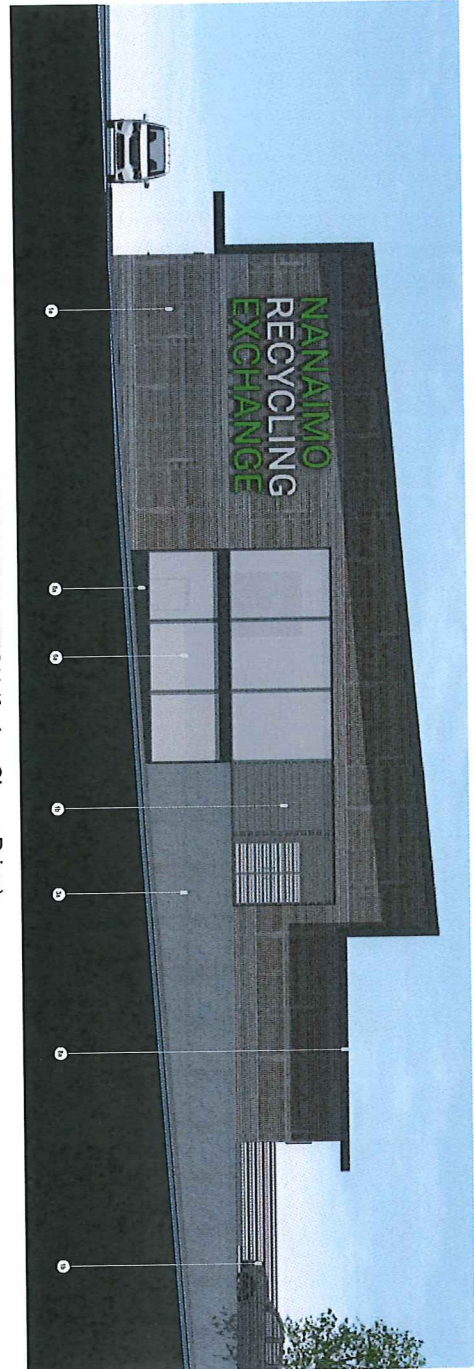
Signage



Exterior Materials Schedule

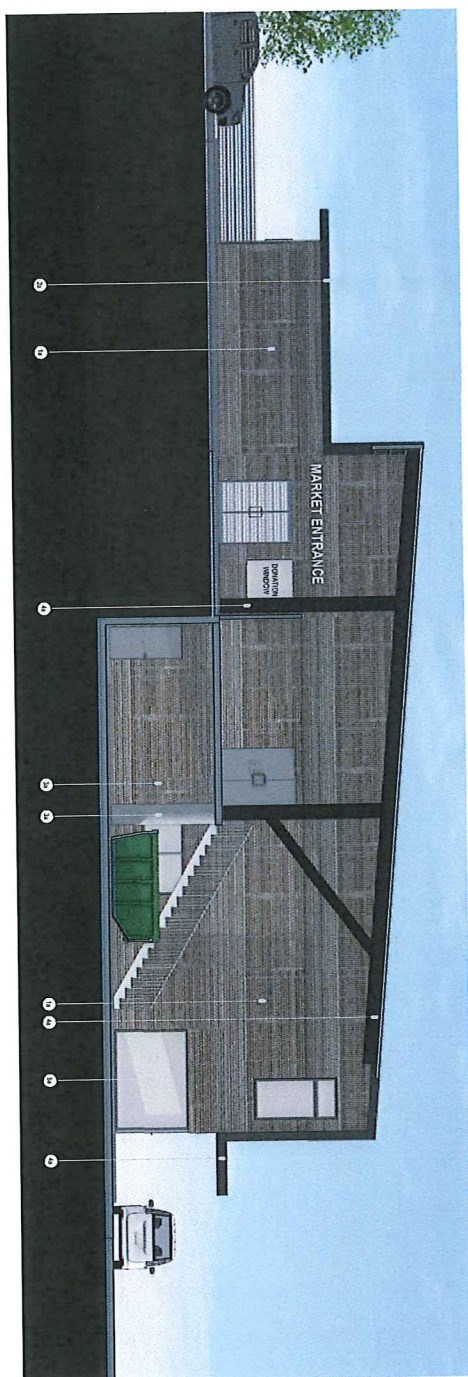
Material	Finish	Notes
1. Dark Grey Siding	Dark Grey Siding	Dark Grey Siding
2. Dark Grey Siding	Dark Grey Siding	Dark Grey Siding
3. Dark Grey Siding	Dark Grey Siding	Dark Grey Siding
4. Dark Grey Siding	Dark Grey Siding	Dark Grey Siding
5. Dark Grey Siding	Dark Grey Siding	Dark Grey Siding
6. Dark Grey Siding	Dark Grey Siding	Dark Grey Siding
7. Dark Grey Siding	Dark Grey Siding	Dark Grey Siding
8. Dark Grey Siding	Dark Grey Siding	Dark Grey Siding
9. Dark Grey Siding	Dark Grey Siding	Dark Grey Siding
10. Dark Grey Siding	Dark Grey Siding	Dark Grey Siding
11. Dark Grey Siding	Dark Grey Siding	Dark Grey Siding
12. Dark Grey Siding	Dark Grey Siding	Dark Grey Siding





11 South Building -  
A403 316-116

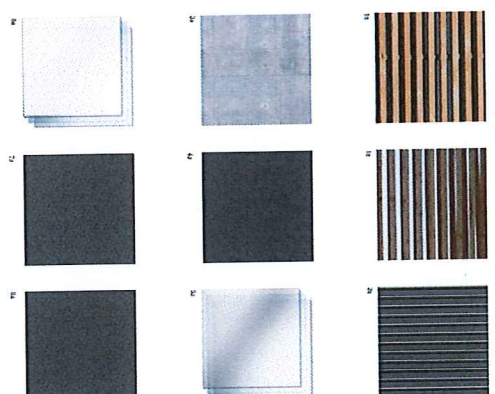
SOUTH ELEVATION (facing Cienar Drive)



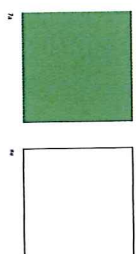
12 South Building -  
A403 316-116

NORTH ELEVATION

#### Exterior Materials



#### Signage



#### Exterior Materials Schedule

Material	Finish	Notes
1. Concrete - Solid Color	-	See Color Chart for Material
2. Concrete - Solid Color	-	See Color Chart for Material
3. Concrete - Solid Color	-	See Color Chart for Material
4. Concrete - Solid Color	-	See Color Chart for Material
5. Concrete - Solid Color	-	See Color Chart for Material
6. Concrete - Solid Color	-	See Color Chart for Material
7. Concrete - Solid Color	-	See Color Chart for Material
8. Concrete - Solid Color	-	See Color Chart for Material
9. Concrete - Solid Color	-	See Color Chart for Material
10. Concrete - Solid Color	-	See Color Chart for Material
11. Concrete - Solid Color	-	See Color Chart for Material
12. Concrete - Solid Color	-	See Color Chart for Material

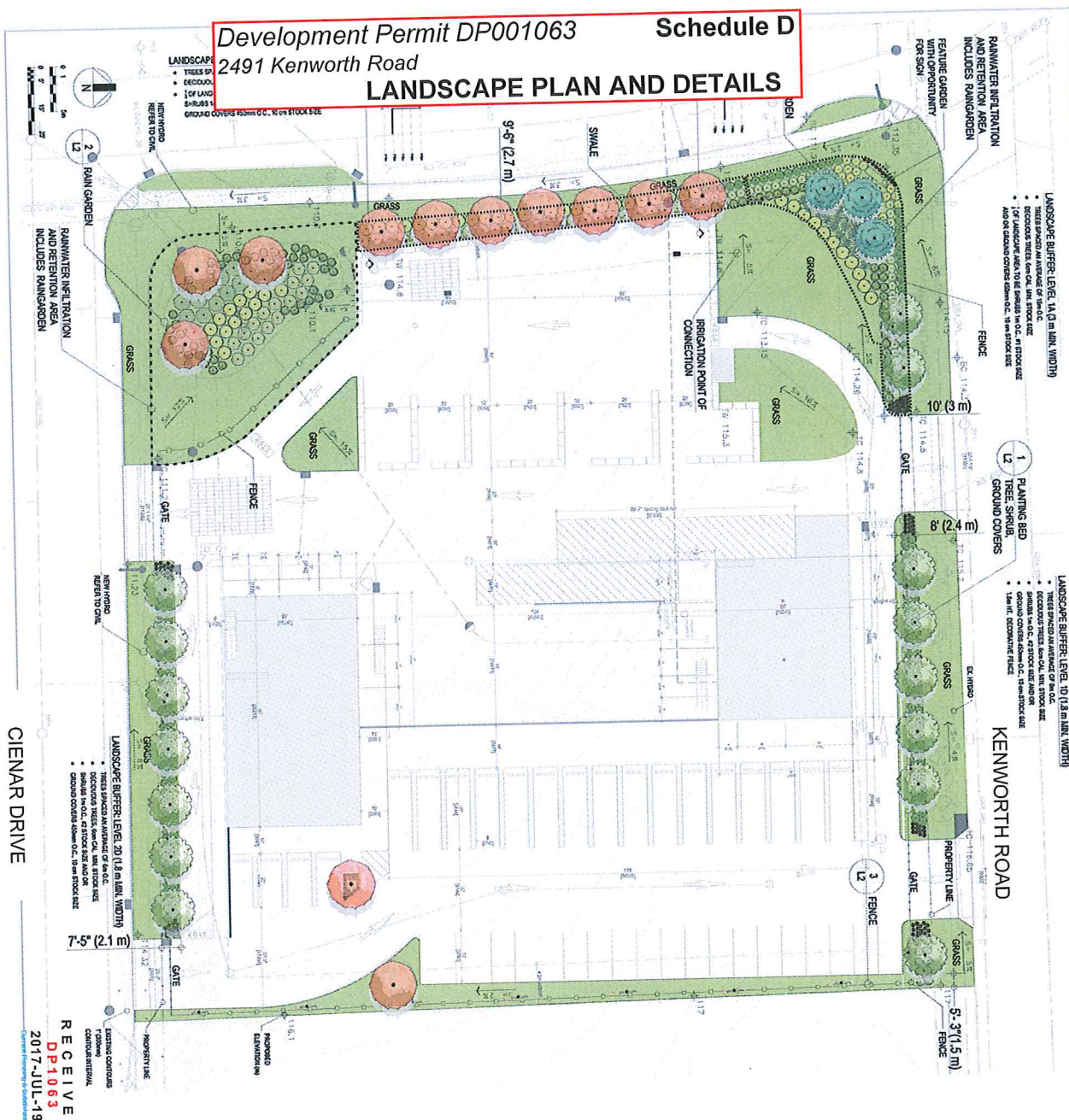


**Development Permit DP001063**













## Schedule D

2491 Kenworth Road

## LANDSCAPE PLAN AND DETAILS



### LEGEND

		OT <sup>+</sup>	SIZE	BOTANICAL NAME	COMMON NAME
12		Ken. OIL		<i>Ascarum Thapsia</i>	Kenya Red Thapsia
15		Ken. OIL		<i>Cordia alliodora</i>	First Fruits
3		1.5m HT. SHRUBS		<i>Passiflora foetida</i>	Passiflora
41		OT <sup>+</sup>	SIZE	<i>BOUQUINIA LAUREA</i>	COMMON NAME
41		OT <sup>+</sup>		<i>Cassia siamea</i>	Red Tree
41		OT <sup>+</sup>		<i>Cassia siamea</i>	Red Tree
41		OT <sup>+</sup>		<i>Cassia siamea</i>	Red Tree
41		OT <sup>+</sup>		<i>Cassia siamea</i>	Red Tree
41		OT <sup>+</sup>		<i>Cassia siamea</i>	Red Tree
41		OT <sup>+</sup>		<i>Cassia siamea</i>	Red Tree
41		OT <sup>+</sup>		<i>Cassia siamea</i>	Red Tree
41		OT <sup>+</sup>		<i>Cassia siamea</i>	Red Tree

### GENERAL GRADING NOTES

1. PLANTING TREES AND SHRUBS SHALL NOT BE ALLOWED UNTIL THE GROUND SURFACE HAS BEEN RAISED TO THE ABOUT 25 CM ABOVE THE EXISTING GRADE. THE CONTRACTOR SHALL BE RESPONSIBLE FOR OBTAINING THE NECESSARY PERMITS FOR PLANTING, EXCAVATION OF SUBGRADE IS REQUIRED TO PREPARE FOR PLANTING.

2. THE CONTRACTOR SHALL REQUIRE POSITIVE DRAINAGE IN ALL GRADED AREAS. THE CONTRACTOR SHALL PROVIDE DRAINAGE SYSTEMS TO REMOTE FROM THE DRAINAGE AND ON ALL ROAD SURFACES. A MINIMUM 1% SHALL BE PROVIDED.

3. REFER TO ENGINEER'S PLANS FOR GRADING INCLUDING PAVING LOT, DRIVE, AND SIDEWALKS. ALL DISCREPANCIES SHALL BE CORRECTED BEFORE THE START OF CONSTRUCTION. THE CONTRACTOR SHALL BE RESPONSIBLE FOR OBTAINING THE NECESSARY PERMITS FOR PLANTING, EXCAVATION OF SUBGRADE IS REQUIRED TO PREPARE FOR PLANTING.

## GENERAL LANDSCAPE NOTES

- [illegible]

## LANDSCAPE

## PLANTING & GRADING

ADDRESS:  
2491 KENWORTH ROAD

LEGAL DESCRIPTION:  
LOT A, SECTION 20,  
RANGE 6, MOUNTAIN  
DISTRICT, PLAN 48960



Issues & Revisions	
No. Date	Details
4. 10/26/11	part 12 PROOF FOR REVIEW
3. 10/26/11	part 10 PROOF FOR REVIEW
2. 10/27/11	part 10
1. 11/27/11	part 10
5. 11/27/11	part 10
6. 11/27/11	part 10
7. 11/27/11	part 10
8. 11/27/11	part 10
9. 11/27/11	part 10
10. 11/27/11	part 10
11. 11/27/11	part 10
12. 11/27/11	part 10
13. 11/27/11	part 10
14. 11/27/11	part 10
15. 11/27/11	part 10
16. 11/27/11	part 10
17. 11/27/11	part 10
18. 11/27/11	part 10
19. 11/27/11	part 10
20. 11/27/11	part 10
21. 11/27/11	part 10
22. 11/27/11	part 10
23. 11/27/11	part 10
24. 11/27/11	part 10
25. 11/27/11	part 10
26. 11/27/11	part 10
27. 11/27/11	part 10
28. 11/27/11	part 10
29. 11/27/11	part 10
30. 11/27/11	part 10
31. 11/27/11	part 10
32. 11/27/11	part 10
33. 11/27/11	part 10
34. 11/27/11	part 10
35. 11/27/11	part 10
36. 11/27/11	part 10
37. 11/27/11	part 10
38. 11/27/11	part 10
39. 11/27/11	part 10
40. 11/27/11	part 10
41. 11/27/11	part 10
42. 11/27/11	part 10
43. 11/27/11	part 10
44. 11/27/11	part 10
45. 11/27/11	part 10
46. 11/27/11	part 10
47. 11/27/11	part 10
48. 11/27/11	part 10
49. 11/27/11	part 10
50. 11/27/11	part 10
51. 11/27/11	part 10
52. 11/27/11	part 10
53. 11/27/11	part 10
54. 11/27/11	part 10
55. 11/27/11	part 10
56. 11/27/11	part 10
57. 11/27/11	part 10
58. 11/27/11	part 10
59. 11/27/11	part 10
60. 11/27/11	part 10
61. 11/27/11	part 10
62. 11/27/11	part 10
63. 11/27/11	part 10
64. 11/27/11	part 10
65. 11/27/11	part 10
66. 11/27/11	part 10
67. 11/27/11	part 10
68. 11/27/11	part 10
69. 11/27/11	part 10
70. 11/27/11	part 10
71. 11/27/11	part 10
72. 11/27/11	part 10
73. 11/27/11	part 10
74. 11/27/11	part 10
75. 11/27/11	part 10
76. 11/27/11	part 10
77. 11/27/11	part 10
78. 11/27/11	part 10
79. 11/27/11	part 10
80. 11/27/11	part 10
81. 11/27/11	part 10
82. 11/27/11	part 10
83. 11/27/11	part 10
84. 11/27/11	part 10
85. 11/27/11	part 10
86. 11/27/11	part 10
87. 11/27/11	part 10
88. 11/27/11	part 10
89. 11/27/11	part 10
90. 11/27/11	part 10
91. 11/27/11	part 10
92. 11/27/11	part 10
93. 11/27/11	part 10
94. 11/27/11	part 10
95. 11/27/11	part 10
96. 11/27/11	part 10
97. 11/27/11	part 10
98. 11/27/11	part 10
99. 11/27/11	part 10
100. 11/27/11	part 10

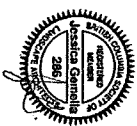
Project: NRE13  
Date: JULY 2017  
Drawn: JG Checked: JG  
Scale: NOTED  
sheet: L1 OF 2



LANDSCAPE  
DETAILS

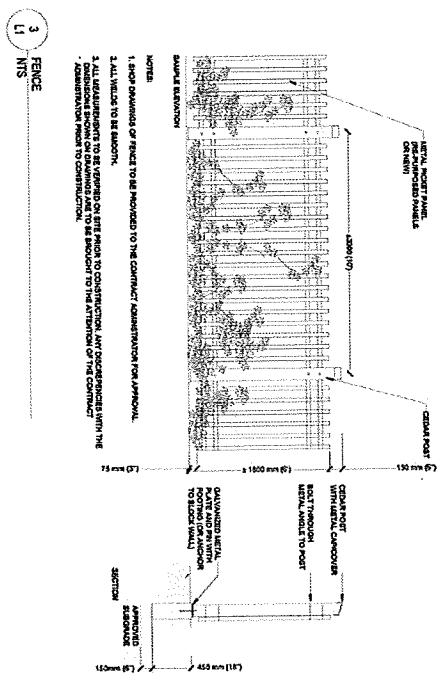
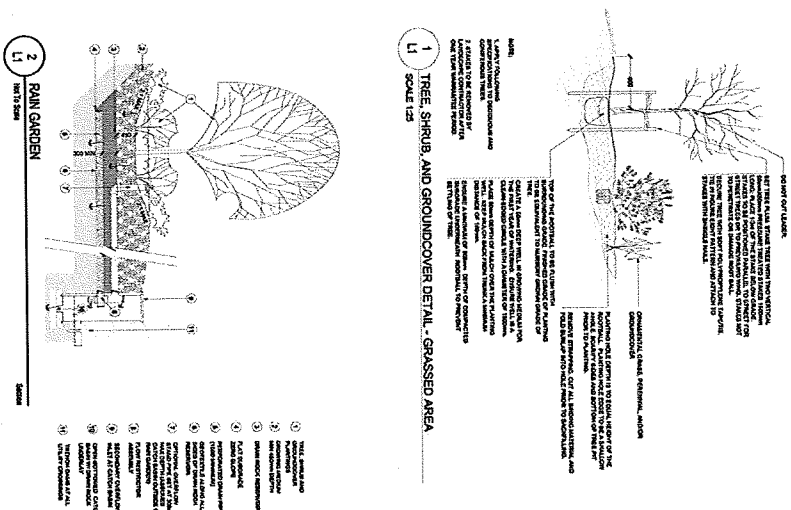
**ADDRESS:**  
2491 KENNORTH ROAD,  
NANAIMO, BC

**LEGAL DESCRIPTION:**  
LOT A, SECTION 20,  
RANGE 6, MOUNTAIN  
DISTRICT, PLAN 48960



Copyright Clearance Center, Inc. is the copyright owner of this work. All rights are reserved. No part of this work may be reproduced, stored in a retrieval system, or transmitted, in any form or by any means, electronic, mechanical, photocopying, recording, or by any information storage or retrieval system, without prior written permission from Copyright Clearance Center, Inc.

Project: NRE13  
Date: JULY 2017  
Drawn: JG Checked: JG  
Scale: NOTED  
Sheet: 12 OF 2



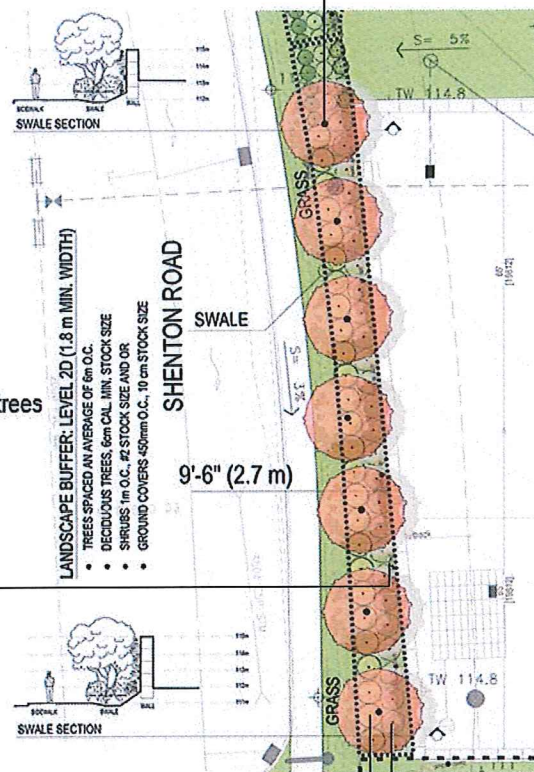




**Trees - Karpick Maple**  
**Size: 20' spread, 40' height**  
**Suggested use: rain-gardens, street trees**



**Climbers - Virginia creeper**  
**Size: 10' spread, 50' height**  
**Suggested use: woody climber, covers walls**



**Shrubs: yellow and red twigged dogwoods**  
**Size: 5 to 6' spread, 5 to 6' height**  
**Suggested use: adaptable native shrub for rain-gardens, winter colour, twiggy dense form for screening**